

THIS DRAWING IS UNPUBLISHED. RELEASED FOR PUBLICATION 2011. BY TYCO ELECTRONICS CORPORATION. ALL RIGHTS RESERVED. ATLANTIC VERSION TERMINATOR INTERFACE ADAPTER. PART NUMBER, REVISION, DESCRIPTION, FEED TYPE, CONVERT TO, PART NUMBERS REQUIRED.

APPLICATOR DATA. CRIMP SIZE, WIRE 1.78 mm, INSUL 2.29 mm. APPLICATOR INSTRUCTIONS 408-10389.

TERMINAL DATA: TE TERMINAL. TE CRIMP SPECIFICATION. TERMINAL NAME: MCON-1.2 CB. WIRE STRIP LENGTH, INSULATION DIAMETER RANGE.

WIRE SIZE, CRIMP HEIGHT mm, CRIMP HEIGHT REFERENCE SETTING. 1.50mm2, 16 AWG, 1.00mm2, 18 AWG.

- RECOMMENDED SPARE PARTS. GREASE BEARING SURFACES LIGHTLY. LUBRICATE DAILY PER THE APPLICATOR INSTRUCTION SHEET SUPPLIED WITH THE APPLICATOR.

*WARNING ON INSTALLATION, SET WIRE DISC, ITEM 40 TO LARGEST WIRE SIZE SETTING. USE OF SETTINGS BELOW MINIMUM REQUIRED CRIMP HEIGHT SETTING WILL CAUSE DAMAGE TO CRIMP TOOLING.

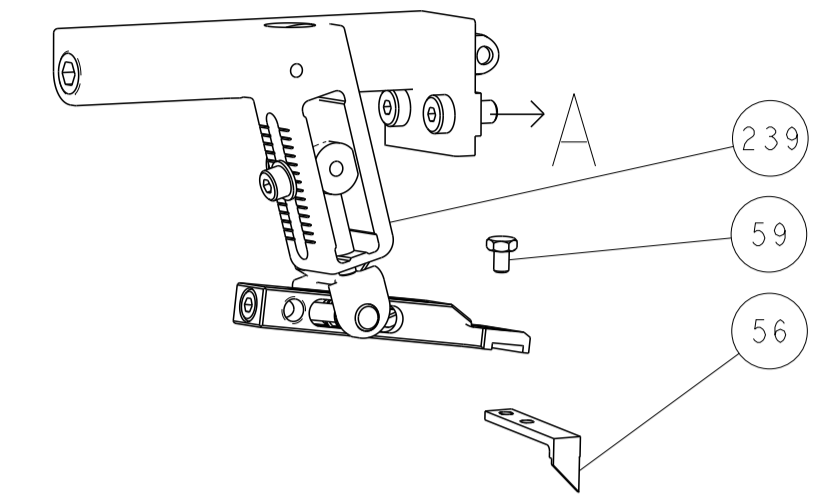
ATLANTIC VERSION Shown on sheets 1 of 4 & 2 of 4 (Pacific version shown on sheets 3 of 4 & 4 of 4)

REVISIONS. SET UP GAUGE 2119599-1. LOC A. DIST 66. P LYN DESCRIPTION DATE DWN APVD. ECR-16-002180 12FEB2016 MR CT. 2119957-2 APPLICATOR SHIM PACK 260. 8-21084-0 O-RING, .676 ID, .070 DIA. MAT. 252.

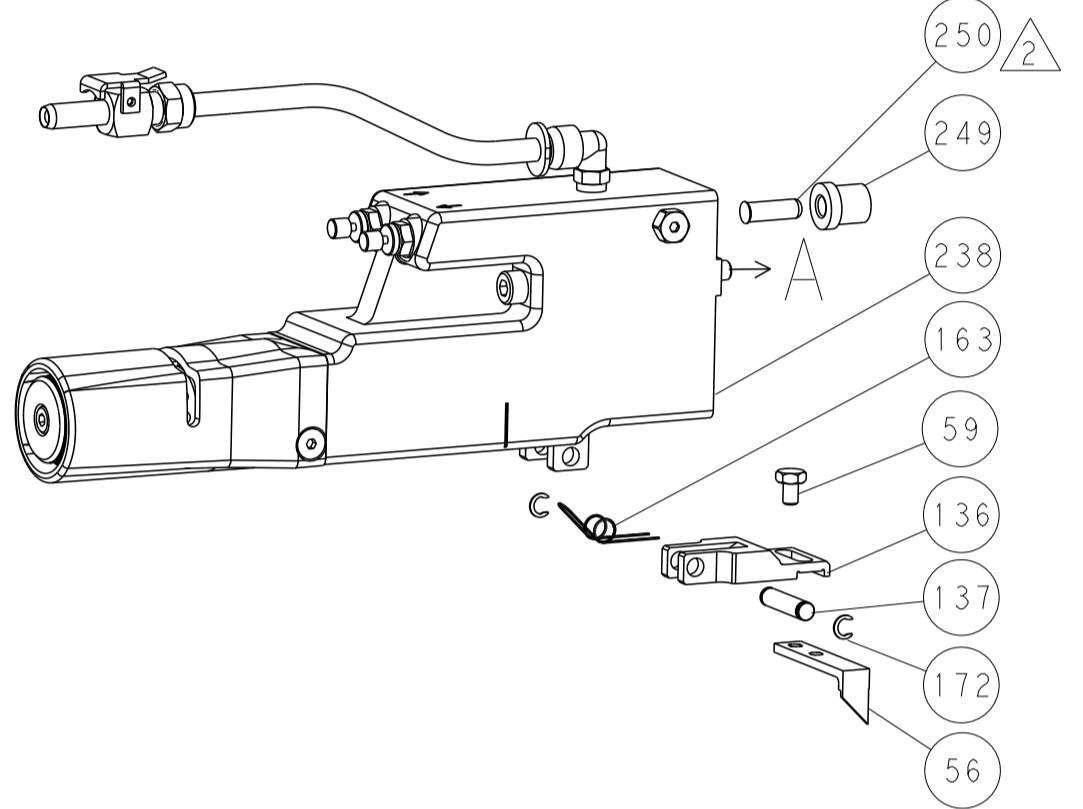
DIMENSIONS: mm. TOLERANCES UNLESS OTHERWISE SPECIFIED: 0 PLC +/-, 1 PLC +/-, 2 PLC +/-, 3 PLC +/-, 4 PLC +/-, ANGLES +/-, FINISH. MATERIAL: . DIMENSIONS: mm. TOLERANCES UNLESS OTHERWISE SPECIFIED: 0 PLC +/-, 1 PLC +/-, 2 PLC +/-, 3 PLC +/-, 4 PLC +/-, ANGLES +/-, FINISH. MATERIAL: .

LOC	DIST	REV	DESCRIPTION	DATE	OWN	APVD
A	66		SEE SHEET 1			

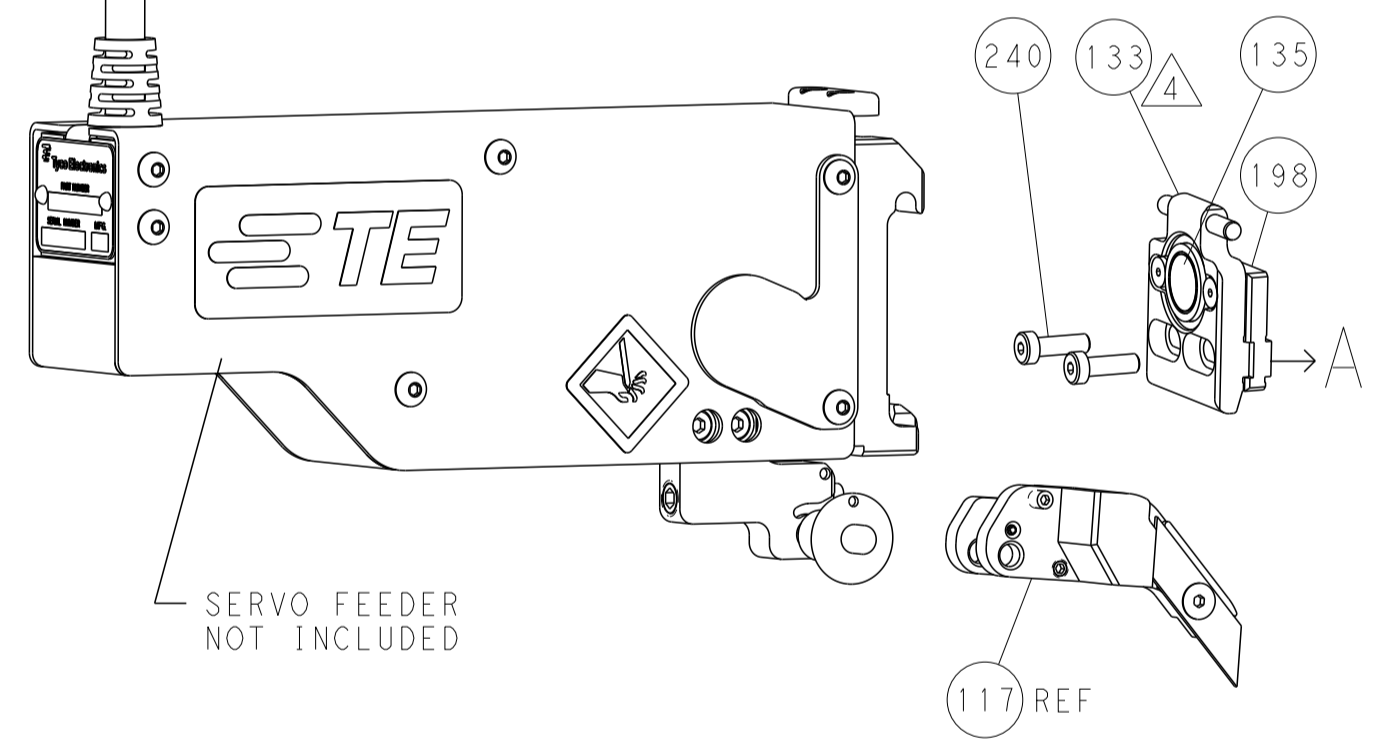
FEED TYPE MECHANICAL



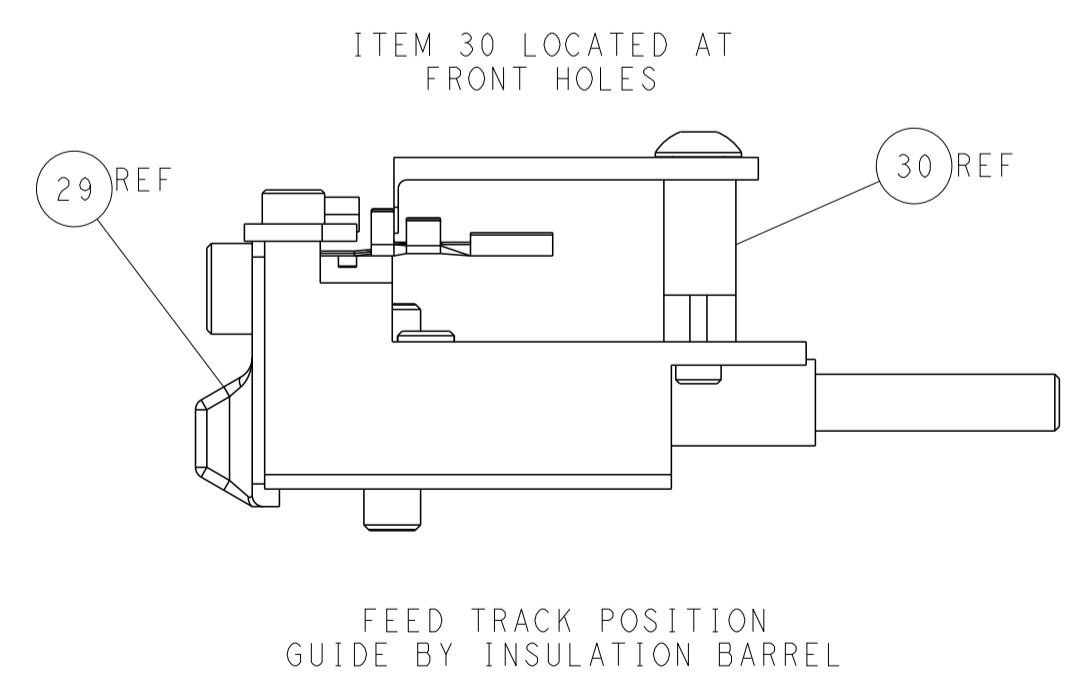
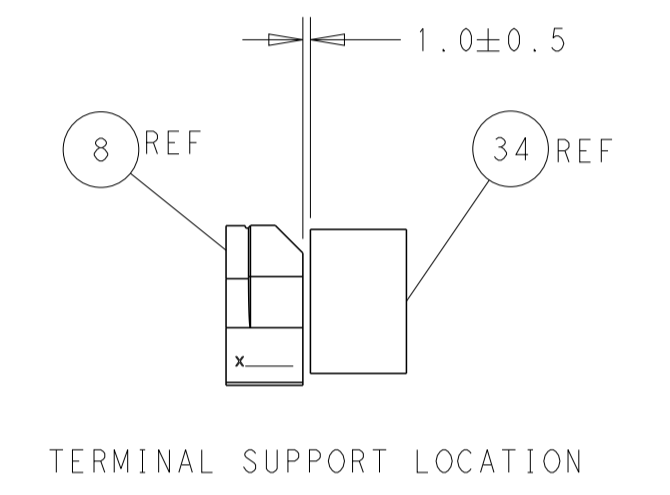
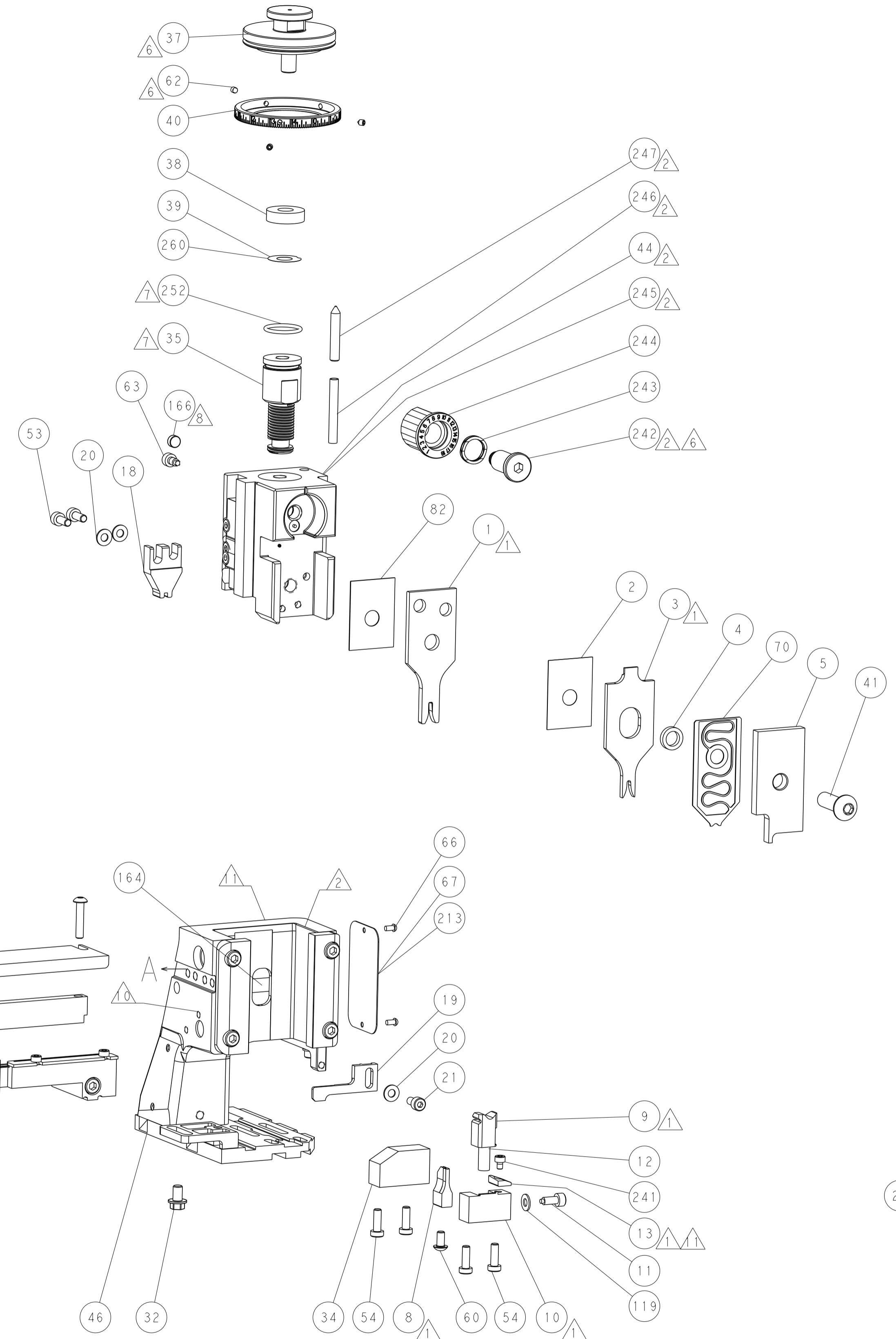
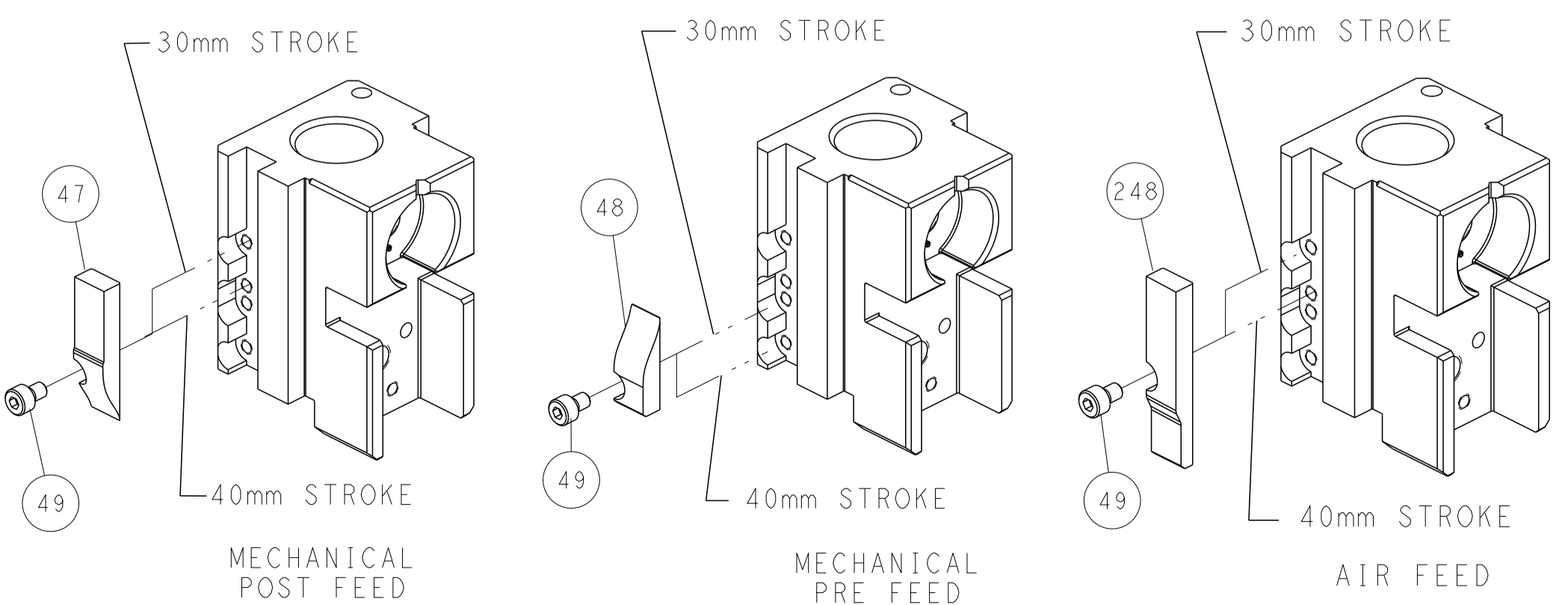
PNEUMATIC



SERVO LATCH PLATE



CAM POSITIONS

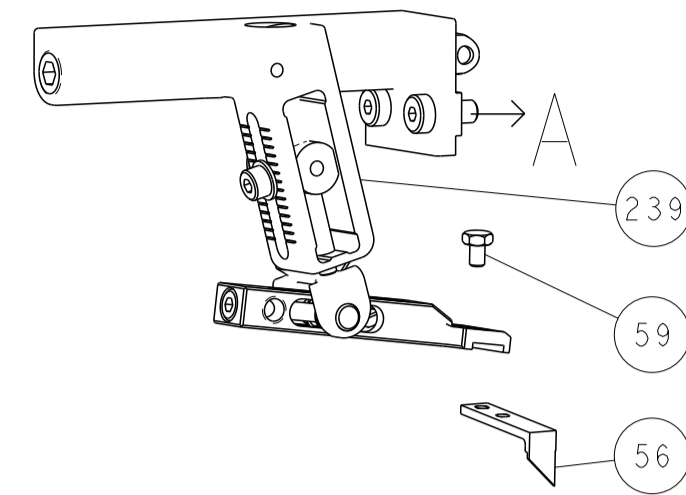


ATLANTIC VERSION
 Shown on sheets 1 of 4 & 2 of 4
 (Pacific version shown on sheets 3 of 4 & 4 of 4)

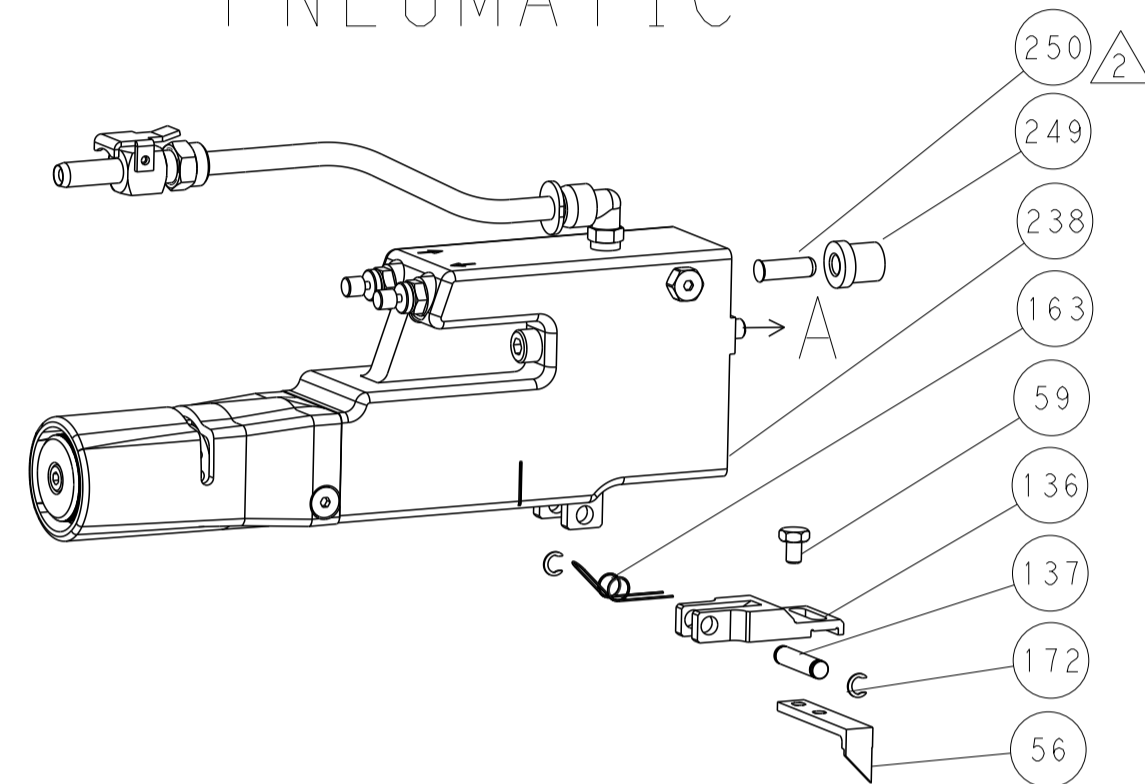
DIMENSIONS: mm 		TOLERANCES UNLESS OTHERWISE SPECIFIED: 0 PLC ± 1 PLC ± 2 PLC ± 3 PLC ± 4 PLC ± ANGLES ± FINISH		DWN B. WEAVER 26AUG2011 CHK C. MOYER 26AUG2011 APVD T. ELBIN 26AUG2011 PRODUCT SPEC APPLICATION SPEC WEIGHT Customer Accessible Production Drawing		NAME Ocean Side Feed Applicator SIZE CAGE CODE DRAWING NO A1 00779 C=2151468 SCALE 1:2 SHEET 2 OF 4 REV F		TE Connectivity Harrisburg, PA 17105-3608	
-----------------------	--	---	--	--	--	---	--	--	--

LOC	DIST	REV	DATE	BY	APPV
A	66				
REVISIONS			DATE	BY	APPV
SEE SHEET 1					

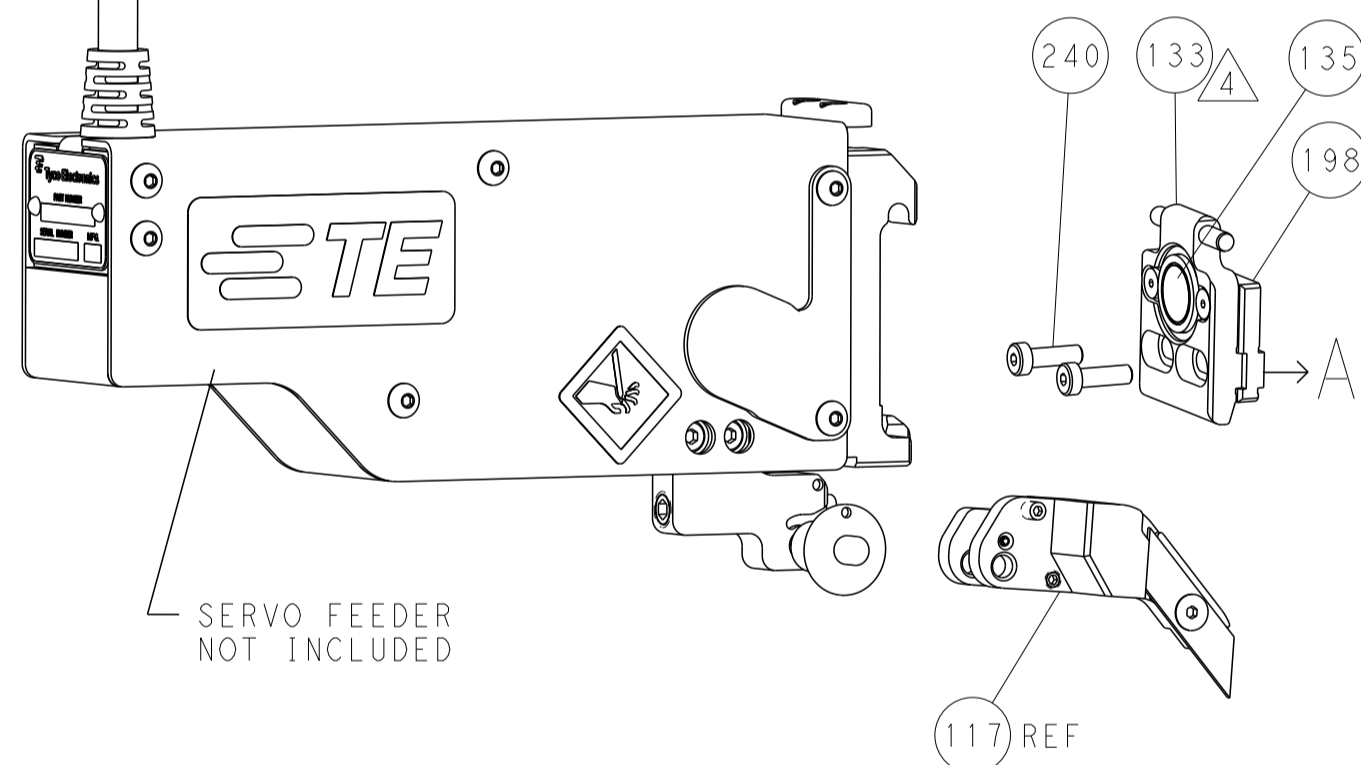
FEED TYPE MECHANICAL



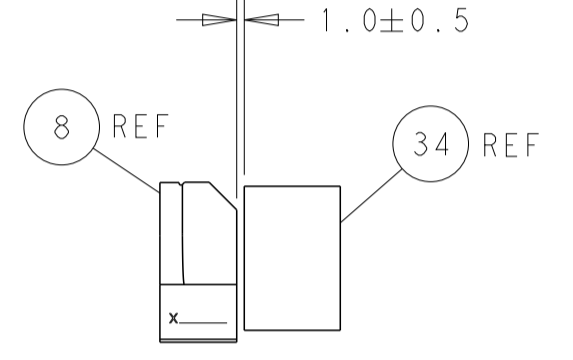
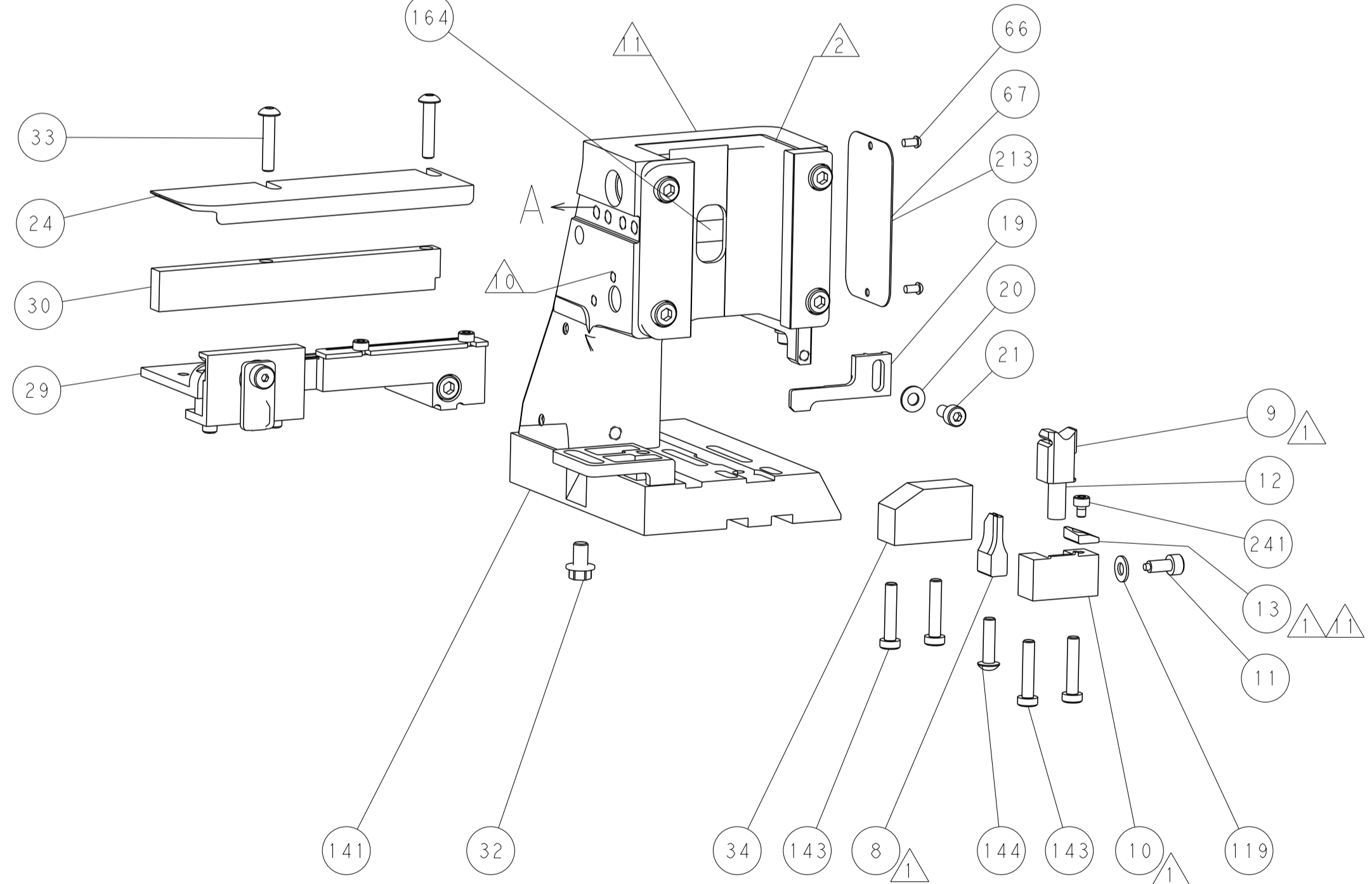
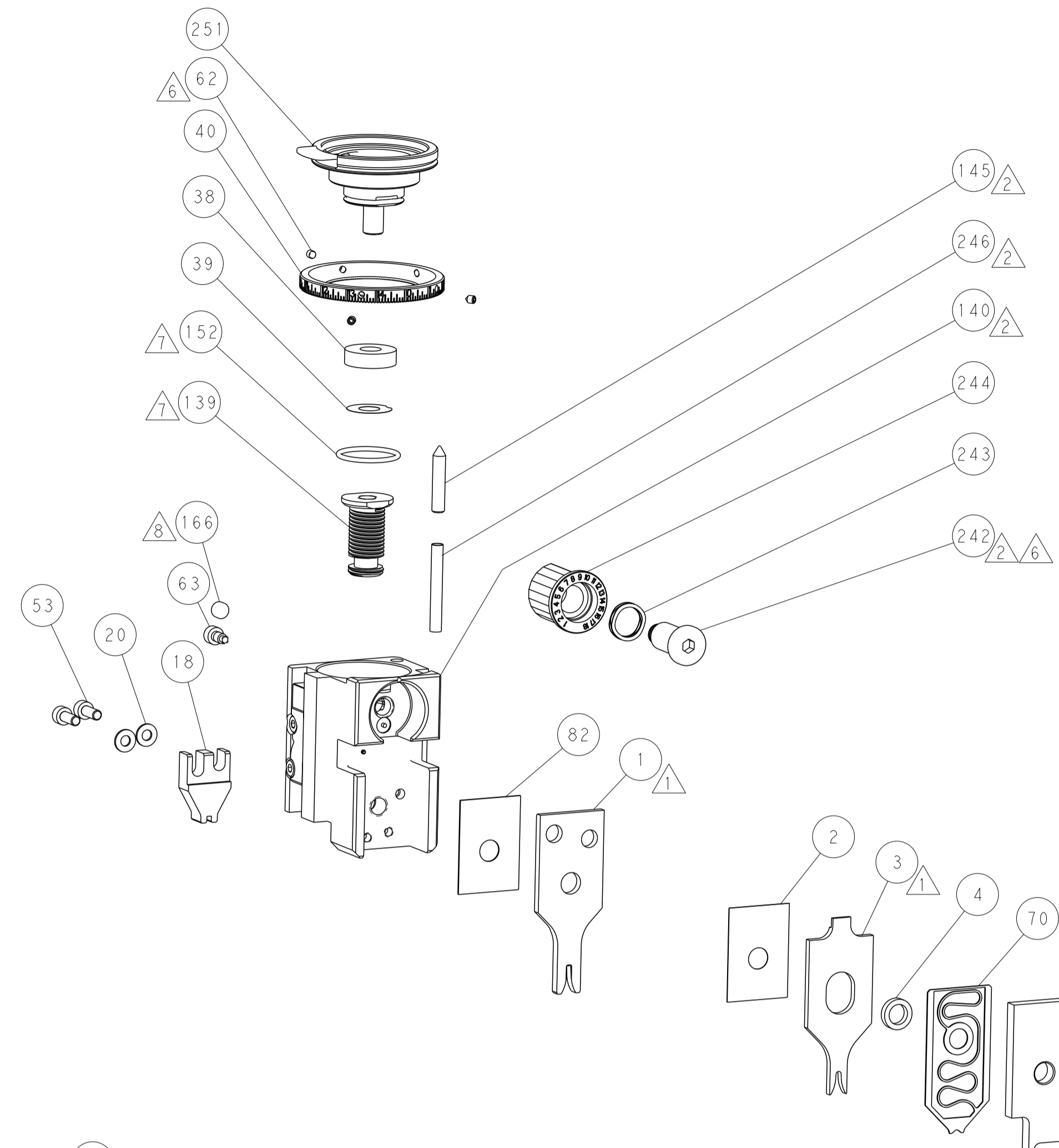
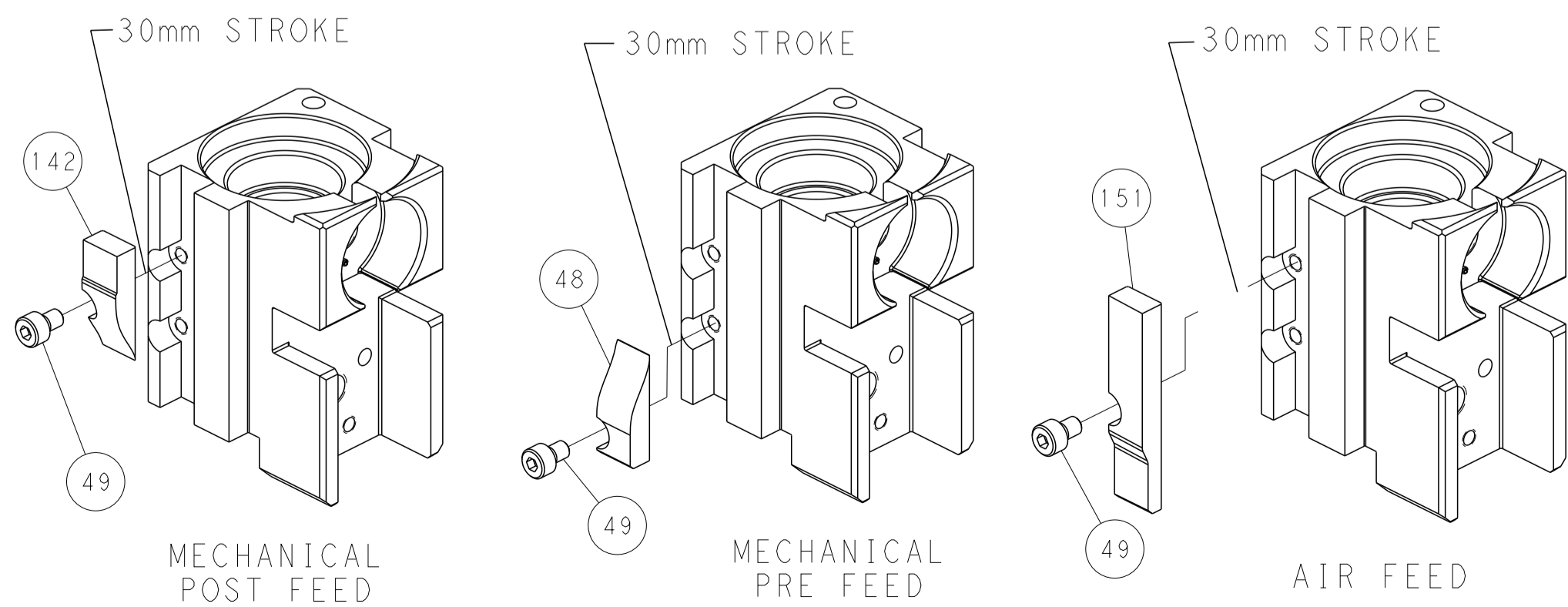
PNEUMATIC



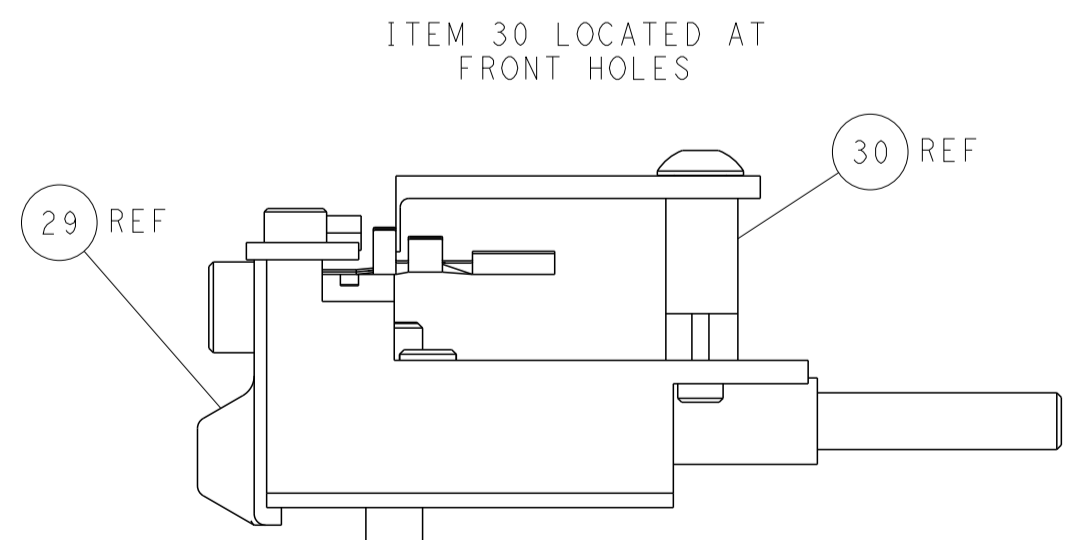
SERVO LATCH PLATE



CAM POSITIONS



TERMINAL SUPPORT LOCATION



FEED TRACK POSITION GUIDE BY INSULATION BARREL

PACIFIC VERSION
 Shown on sheets 3 of 4 & 4 of 4
 (Atlantic version shown on sheets 1 of 4 & 2 of 4)

DIMENSIONS:		TOLERANCES UNLESS OTHERWISE SPECIFIED:		DWG: B. WEAVER 26AUG2011		TE Connectivity	
mm	0 PLC ±	1 PLC ±	2 PLC ±	3 PLC ±	4 PLC ±	ANGLES ±	FINISH ±
MATERIAL:				WEIGHT:		RESTRICTED TO:	
Customer Accessible Production Drawing				SCALE: 1:2		SHEET 4 OF 4 REV F	