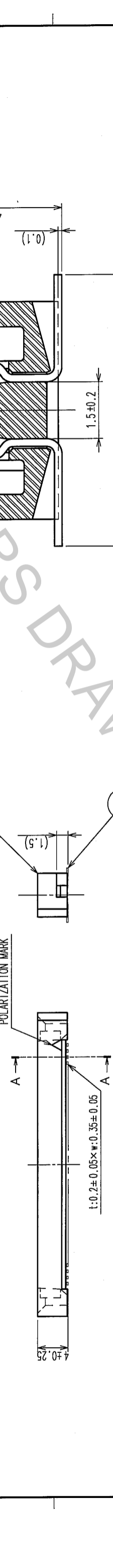
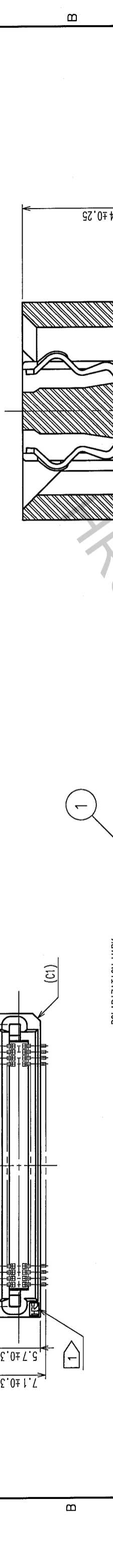


| COUNT | DESCRIPTION OF REVISIONS | BY | CHKD | DATE | COUNT | DESCRIPTION OF REVISIONS | BY | CHKD | DATE |
|-------|--------------------------|----|------|------|-------|--------------------------|----|------|------|
| △     |                          |    |      |      | △     |                          |    |      |      |
| △     |                          |    |      |      | △     |                          |    |      |      |
| △     |                          |    |      |      | △     |                          |    |      |      |



A-A (10:1)

DIMENSION TABLE OF CONNECTOR AND P.C.B. LAND PATTERN

| PART No.           | CODE No.        | 6  | A    | B     | C    | D    |
|--------------------|-----------------|----|------|-------|------|------|
| FX6A-20S-0.8SV(93) | CL576-0301-7-93 | 20 | 15.8 | 12.95 | 10.9 | 7.2  |
| FX6A-40S-0.8SV(93) | CL576-0303-2-93 | 40 | 23.8 | 20.95 | 18.9 | 15.2 |
| FX6A-50S-0.8SV(93) | CL576-0304-5-93 | 50 | 27.8 | 24.95 | 22.9 | 19.2 |
| FX6A-60S-0.8SV(93) | CL576-0305-8-93 | 60 | 31.8 | 28.95 | 26.9 | 23.2 |
| FX6A-80S-0.8SV(93) | CL576-0307-3-93 | 80 | 39.8 | 36.95 | 34.9 | 31.2 |

- NOTE
- 1 HRS MARK SHALL BE OPTIONAL.
  - 2 LEAD CO-PLANARITY SHALL BE 0.1 MAX.
  - 3 EMBOSSED CARRIER TAPE PACKAGING SHALL BE APPLIED FOR THIS PRODUCT.
  - 4 THIS PRODUCT HAS TAPE FOR VACUUM PICKUP. SEE NEXT PAGE FOR DETAIL OF STICKING POSITION, ETC.
  - 5 FOR MODIFICATION, ETC, PREVENTIVE HOLE FOR SINK MARK MAY BE ADDED ACCORDING TO CIRCUMSTANCES.
  - 6 NUMBER OF CONTACTS.
  - 7 THE DIMENSIONS IN PARENTHESES ARE FOR REFERENCE.

RECOMMENDED P.C.B. LAND PATTERN (MOUNT SIDE)

| NO. | MATERIAL              | FINISH, REMARKS       | NO. | MATERIAL        | FINISH, REMARKS |
|-----|-----------------------|-----------------------|-----|-----------------|-----------------|
| 1   | POLYPHENYLENE SULFIDE | LIGHT BROWN (UL94V-0) | 2   | PHOSPHOR BRONZE |                 |

| CONTACT AREA:                                     | GOLD        | 0.1μm min. |
|---|-------------|------------|
| LEAD AREA: <td>TIN-PLATING</td> <td>1μm min.</td> | TIN-PLATING | 1μm min.   |
| UNDER PLATING: <td>NICKLE</td> <td>2μm min.</td>  | NICKLE      | 2μm min.   |

| NO. | MATERIAL              | FINISH, REMARKS       | NO. | MATERIAL        | FINISH, REMARKS |
|-----|-----------------------|-----------------------|-----|-----------------|-----------------|
| 1   | POLYPHENYLENE SULFIDE | LIGHT BROWN (UL94V-0) | 2   | PHOSPHOR BRONZE |                 |

| CODE NO. (OLD) | DRAWN         | DESIGNED | CHECKED   | APPROVED  | RELEASED |
|----------------|---------------|----------|-----------|-----------|----------|
|                | T. YANAGISAWA | J. Noda  | K. Ogawa  | H. Okawa  |          |
|                | '05.08.04     | '05.8.5  | '05-08-05 | '05-08-05 |          |

| DRAWING NO.    | PART NO.         |
|----------------|------------------|
| EDC3-152949-23 | FX6A-S-0.8SV(93) |

| SCALE | UNITS |
|-------|-------|
| FREE  | mm    |

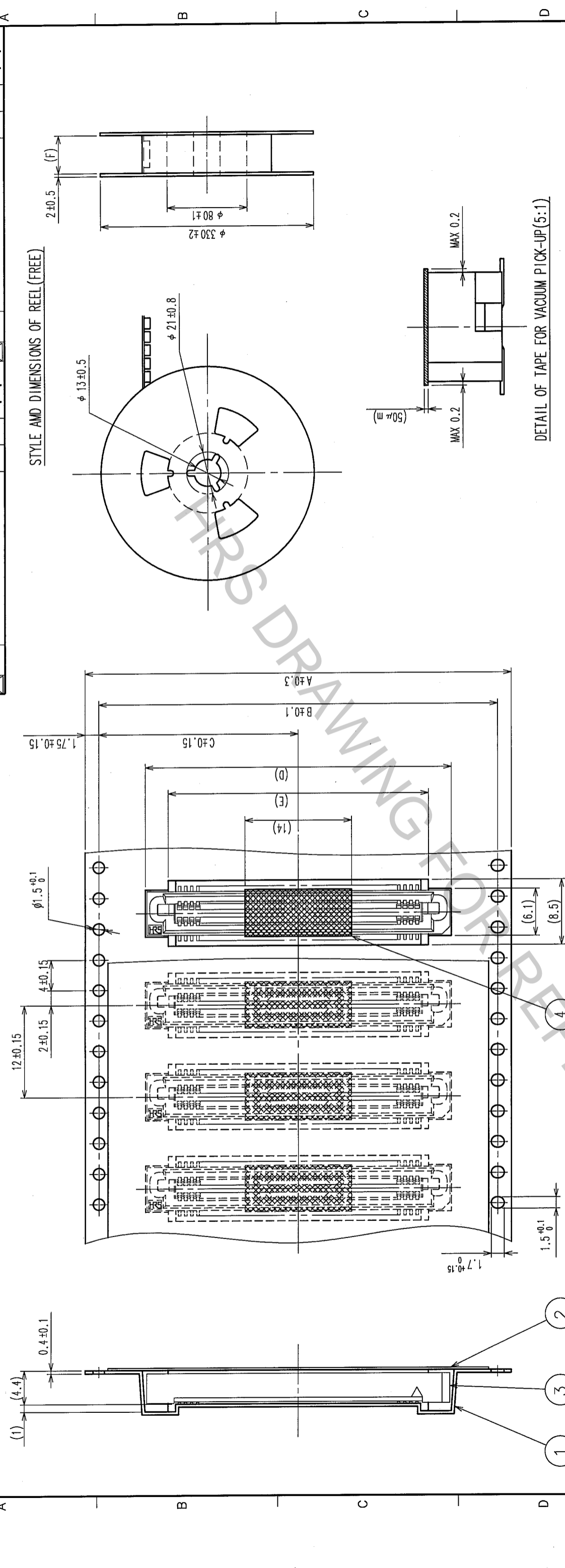
  

| TO | PCK |
|----|-----|
|    |     |

| CODE NO. | CL576 |
|----------|-------|
| 1/2      |       |

| COUNT | DESCRIPTION OF REVISIONS | BY | CHKD | DATE | COUNT | DESCRIPTION OF REVISIONS | BY | CHKD | DATE |
|-------|--------------------------|----|------|------|-------|--------------------------|----|------|------|
|       |                          |    |      |      |       |                          |    |      |      |
|       |                          |    |      |      |       |                          |    |      |      |



**DIMENSION TABLE OF EMBOSSED CARRIER TAPE AND REEL.**

| PART No.           | CODE No.        | A    | B    | C    | D    | E    | F    |
|--------------------|-----------------|------|------|------|------|------|------|
| FX6A-20S-0.8SV(93) | CL576-0301-7-93 | 24.0 | -    | 11.5 | 16.2 | 10.2 | 24.4 |
| FX6A-40S-0.8SV(93) | CL576-0303-2-93 | 44.0 | 40.4 | 20.2 | 24.2 | 18.2 | 44.4 |
| FX6A-50S-0.8SV(93) | CL576-0304-5-93 | 44.0 | 40.4 | 20.2 | 28.2 | 20.2 | 44.4 |
| FX6A-60S-0.8SV(93) | CL576-0305-8-93 | 44.0 | 40.4 | 20.2 | 32.2 | 26.2 | 44.4 |
| FX6A-80S-0.8SV(93) | CL576-0307-3-93 | 56.0 | 52.4 | 26.2 | 40.2 | 34.2 | 58.0 |

| NO. | MATERIAL    | FINISH, REMARKS       | NO. | MATERIAL  | FINISH, REMARKS         |
|-----|-------------|-----------------------|-----|-----------|-------------------------|
| 2   | POLYESTER   | COVER TAPE            | 4   | POLYIMIDE | TAPE FOR VACUUM PICK-UP |
| 1   | POLYSTYRENE | EMBOSSED CARRIER TAPE | 3   |           | (CONNECTOR)             |

**CODE NO. (OLD)**

| DESIGNED      | CHECKED   | APPROVED  | RELEASED |
|---------------|-----------|-----------|----------|
| T. YANAGISAWA | K. Ogawa  | H. Okawa  |          |
| '05.08.04     | '05.08.05 | '05.08.05 |          |

**DRAWING NO.** EDC3-152949-23 **PART NO.** FX6A-\*S-0.8SV(93)

**SCALE** FREE **UNITS** mm

**NOTE 1** THE DIMENSIONS IN PARENTHESES ARE FOR REFERENCE.  
**2** REEL : 1000 CONNECTORS.  
**3** NUMBER OF CONTACTS.

**TRAILER** (REEL: 1000 CONNECTORS)

**EQUIPPED** (REEL: 1000 CONNECTORS)

**COVER TAPE**

**EMBOSSED CARRIER TAPE**

**10 EMPTY COMPONENT COMPARTMENT MIN.**

**10 EMPTY COMPONENT COMPARTMENT MIN.**

**TO** **PCK**

**HIROSE ELECTRIC CO., LTD**

**CL576**

**FORM NO. 229**