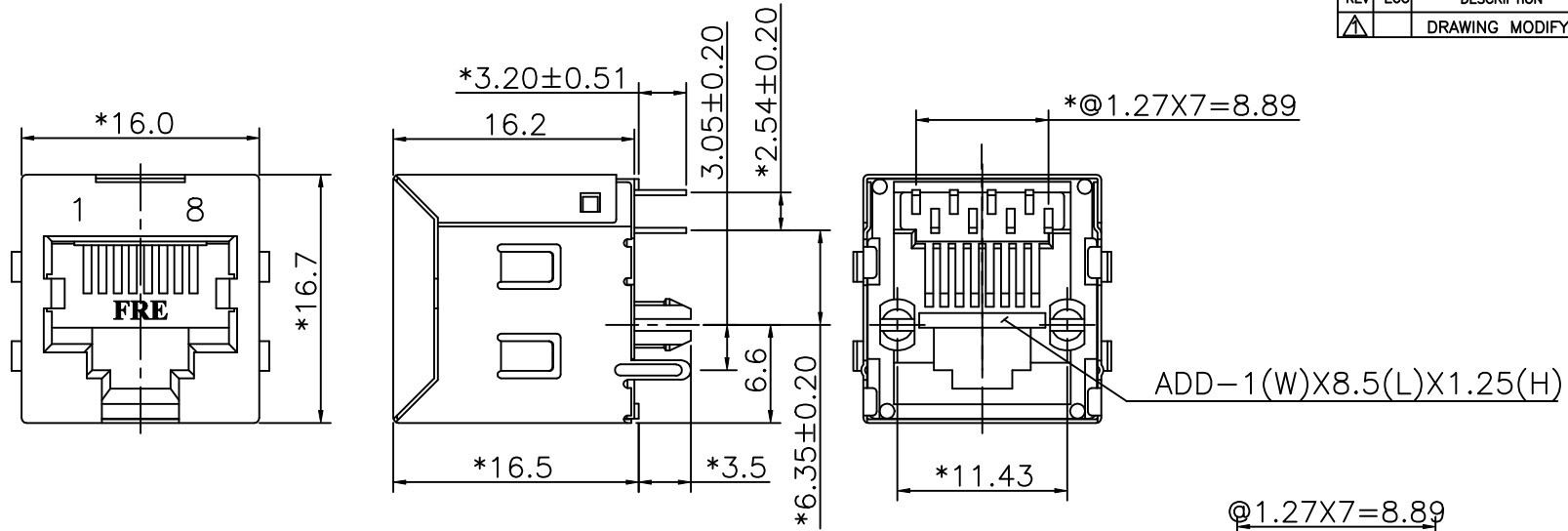


REVISION RECORD				
REV	ECO	DESCRIPTION	DRFT	CHKD
▲		DRAWING MODIFY	JAMIN 12/13/05	



**NOTES:**

**ELECTRICAL:**

- VOLTAGE RATING : 125 VAC RMS.
- CURRENT RATING : 1.5 AMP.
- CONTACT RESISTANCE : 30 MILLIOHMS MAX.
- INSULATION RESISTANCE: 1000 MEGOHMS MIN @ 500 VDC.
- DIELECTRIC STRENGTH : 1000 VAC RMS 60Hz, 1MIN.

**MECHANICAL:**

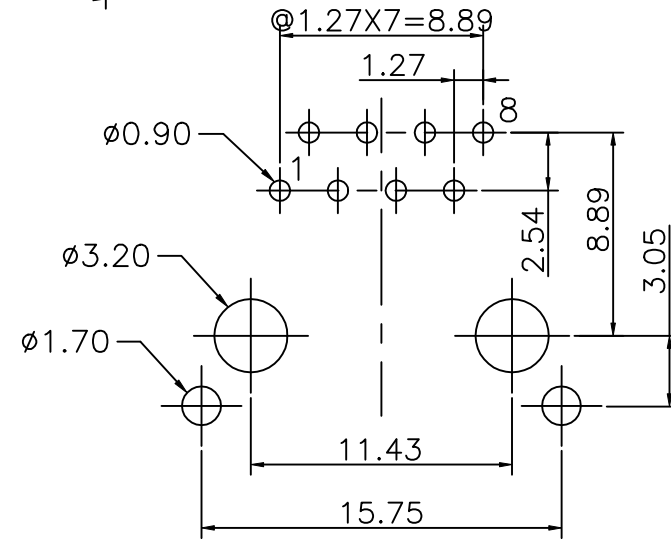
- HOUSING MATERIAL : PBT UL94V-0.
- CONTACT MATERIAL : PHOSPHOR BRONZE t=0.35mm.
- PLATING : GOLD PLATING OVER NICKEL.
- OPERATING LIFE : 750 CYCLES MIN.
- PCB RETENTION PRE-SOLDER : 1 LB MIN.
- PCB RETENTION POST-SOLDER: 10 LBS MIN.

**ENVIRONMENTAL:**

- STORAGE : -40°C TO +85°C.
  - OPERATION: 0°C TO 70°C.
  - WAVE SOLDER TEMPERATURE: 230~250°C (5~10SECONDS).
- MATES WITH MODULAR PLUG CONFORMING TO FCC PART 68, SUBPART F.  
CUL FILE NO. E163191

▲ ROHS PART NUMBER: E5288-3X0X4X-L

- |                                 |                         |
|---------------------------------|-------------------------|
| SHIELD PLATING:                 | GOLD PLATING:           |
| 1- TIN PLATING,W/ SIDE TABS     | 1- 3u" 2- 6u"           |
| 2- NICKEL PLATING,W/ SIDE TABS  | 3- 15u" 4- 30u"         |
| S- TIN PLATING,W/O SIDE TABS    | 5- 50u"                 |
| T- NICKEL PLATING,W/O SIDE TABS | 0-PBT+15%G.F (BK)       |
|                                 | 1-PBT+30%G.F (BK)       |
|                                 | L-PBT+30%G.F (YELLOW) ▲ |



PC Board Layout Component Side Shown

DETACHED LISTS	MM (INCH)	DFTO SAMMY	DATE 03/16/05	FULL RISE ELECTRONIC CO., LTD			
	TOLERANCES EXCEPT AS NOTED	CHKDANKUE	DATE 2005/12/14				
	MM	MFO	DATE	TITLE RJ45 TOP ENTRY PCB MODULAR JACK(DIP TYPE)			
	.0 ±0.20 ±	APPV LUSHENG	DATE 2005/12/14				
.00 ±0.15 ±	MATERIAL :	QTY :	DRAWING NO. GE523014-LC		SIZE A3	REV 1	
.000 ±0.075 ±	ANGLES ±	FINISH :	/PART NO. SEE NOTE				
THIRD ANGLE PROJECTION	SCALE : 3:1	DO NOT SCALE DRAWING		SHEET X OF Y			